

### Stone Lakes NWR Volunteer WQ Readings - May 4, 2008

- Sample Locations
- Highway
- Major Road
- Local Road
- Water Body
- Streams
- Stone Lakes NWR

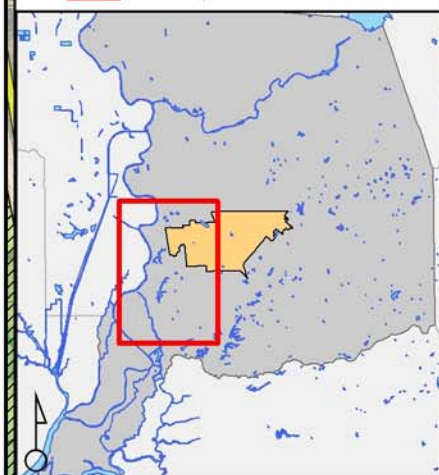
#### Measurement Benchmarks

Temperature: should not be increased more than 5°F above natural receiving water temp  
 DO: should be greater than 7ppm  
 pH: should be between 6.5 and 8.5  
 Turbidity: should be less than 50 NTUs  
 EC: should be less than 340 µS (90th percentile)



Map produced for LWA by SD 20080801  
 City boundary from City of Elk Grove  
 Hydrology and county boundary from Sacramento County  
 Stone Lake Refuge digitized by SD from US Fish and Wildlife Service Map  
 Aerial photo from National Agriculture Imagery Program (NAIP USDA)  
 All data from the Environmental Systems Research Institute (ESRI)

  Map Location



  City of Elk Grove