

Phone: 916.683.7111
Fax: 916.691.3168

Web: www.elkgrovecity.org

8401 Laguna Palms Way
Elk Grove, California 95758



Modification or Addition to Improvement Standards and Details

Modification Number: 200811-01
Effective Date of Change: April 28, 2009
~~November 11, 2008~~

Modification:

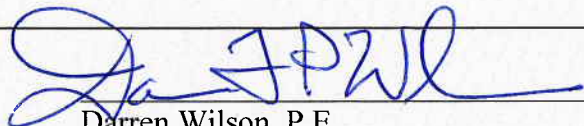
1. Adding new standard drawings for grading/retaining walls, (G-1, G-2, G-3, and G-4).
2. Amending Section 10 in Improvement Standards to reference these new drawings.

Amended specifications are attached. Projects with preconstruction meeting prior to effective date are not subject to modification.


Effect of Modification:

1. These drawings are additional information as referenced from Section 10-4 to 10-6 of the Improvement Standards and Standard Drawings.


Request for Modification Initiated By:

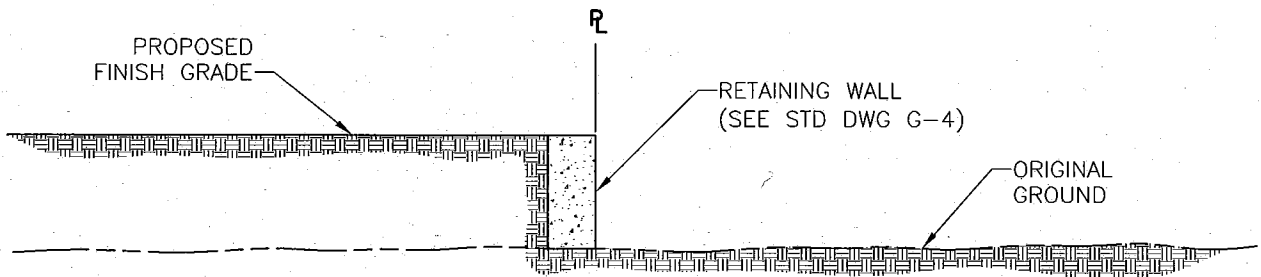
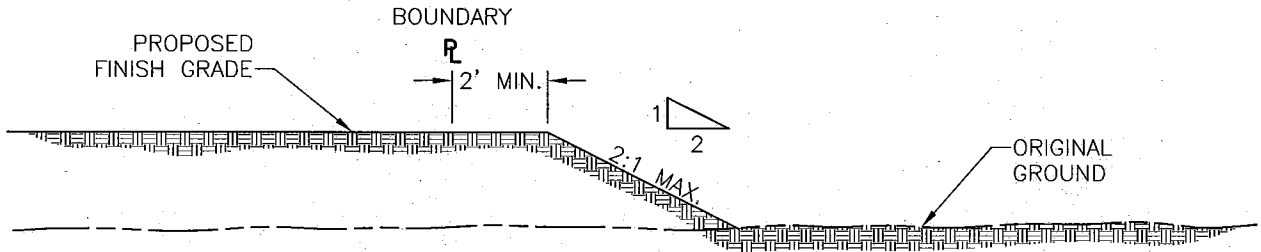

Darren Wilson, P.E. 4/28/09
Date

Modification Reviewed for Conformity and Consistency to Standards:


City Engineer 4/28/09
Date

Modification to Improvement Standards Approved:


Director of Public Works 4/30/09
Date



DATE:
10/27/2008

NOT TO
SCALE

CITY OF ELK GROVE - PUBLIC WORKS

APPROVED BY:

CITY ENGINEER

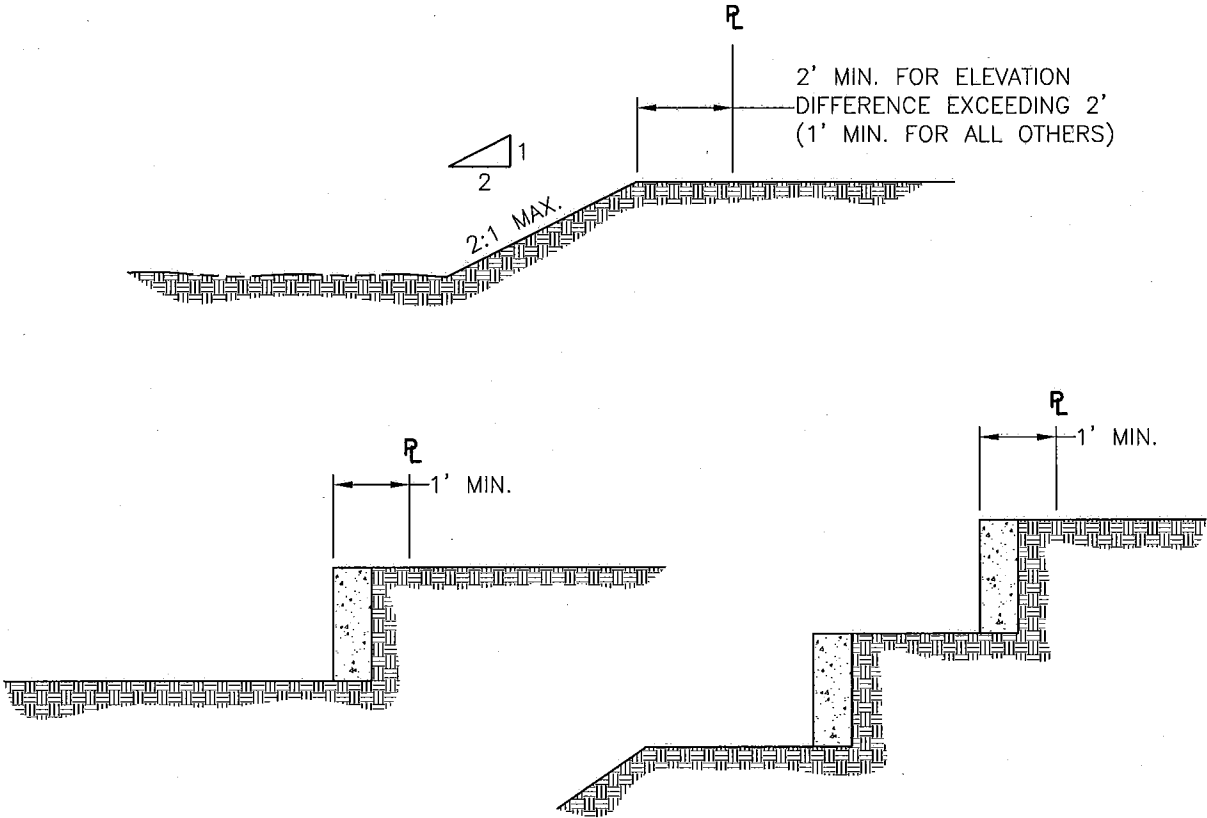
REVISION	BY	APPROVED	DATE

**EXTERIOR PERIMETER
PROPERTY LINE GRADING FOR
FILL AREAS**



DRAWING NUMBER

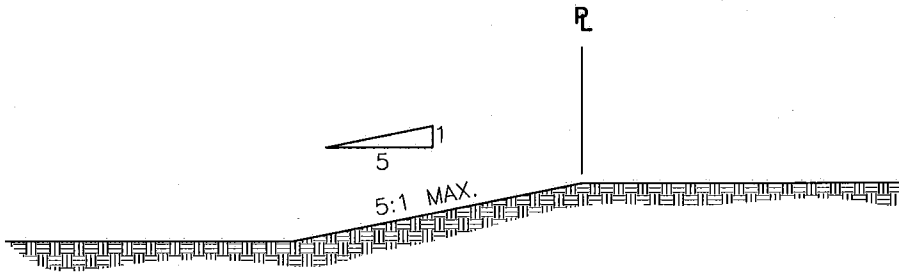
G - 1



RETAINING WALL

(SEE STD DWG G-3 AND G-4)

NOTE: NO DOUBLE RETAINING WALLS SHALL BE CONSTRUCTED ON SIDE YARD



DATE: 10/27/2008		NOT TO SCALE	
REVISION	BY	APPROVED	DATE


CITY OF ELK GROVE - PUBLIC WORKS

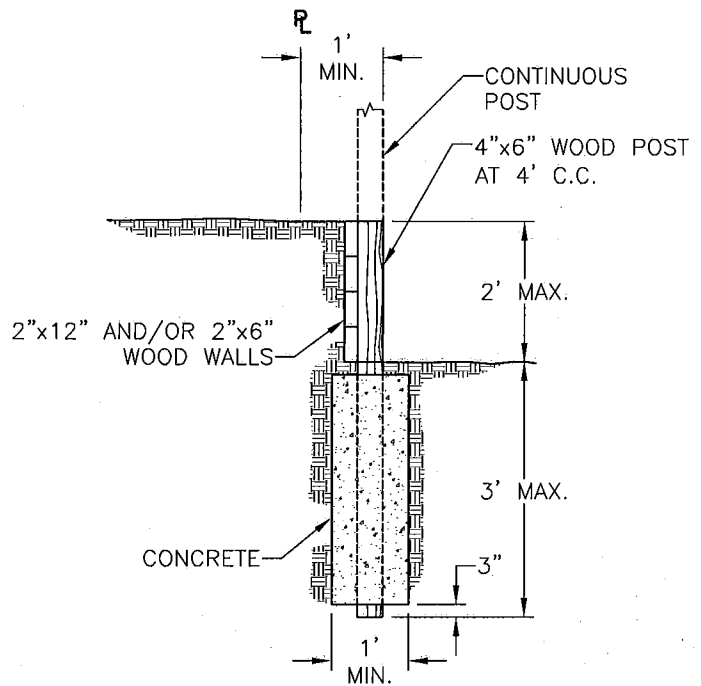
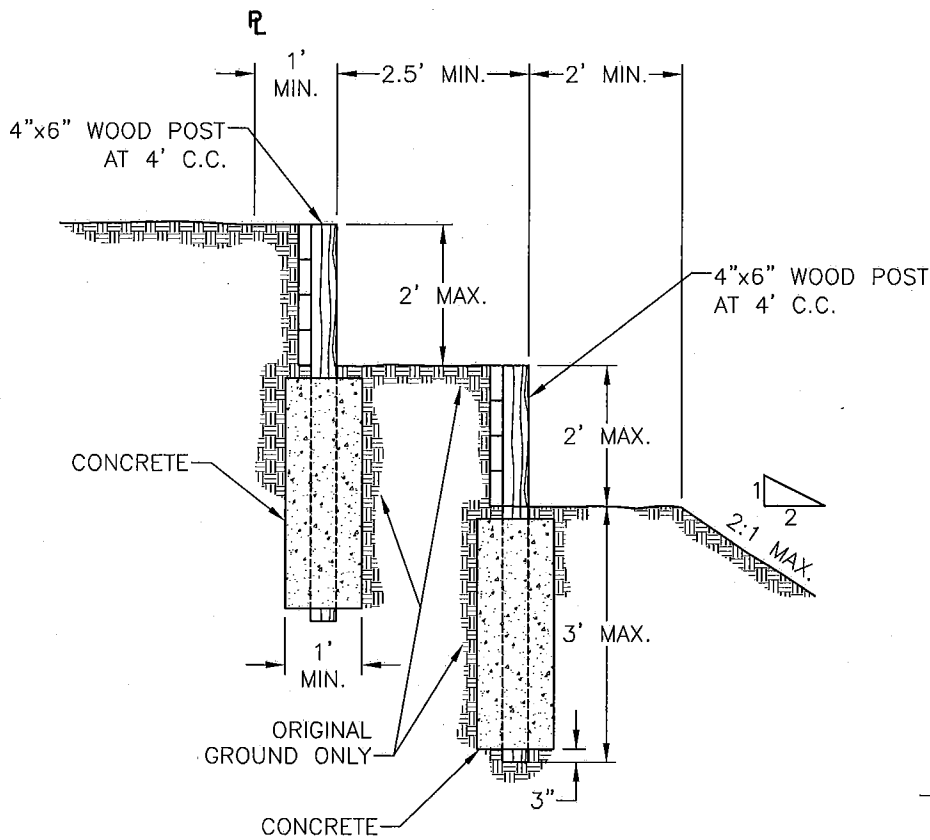
GRADING FOR INTERIOR PROPERTY LINES AND PERIMETER PROPERTY LINES IN CUT AREAS

APPROVED BY:

CITY ENGINEER

DRAWING NUMBER
G - 2



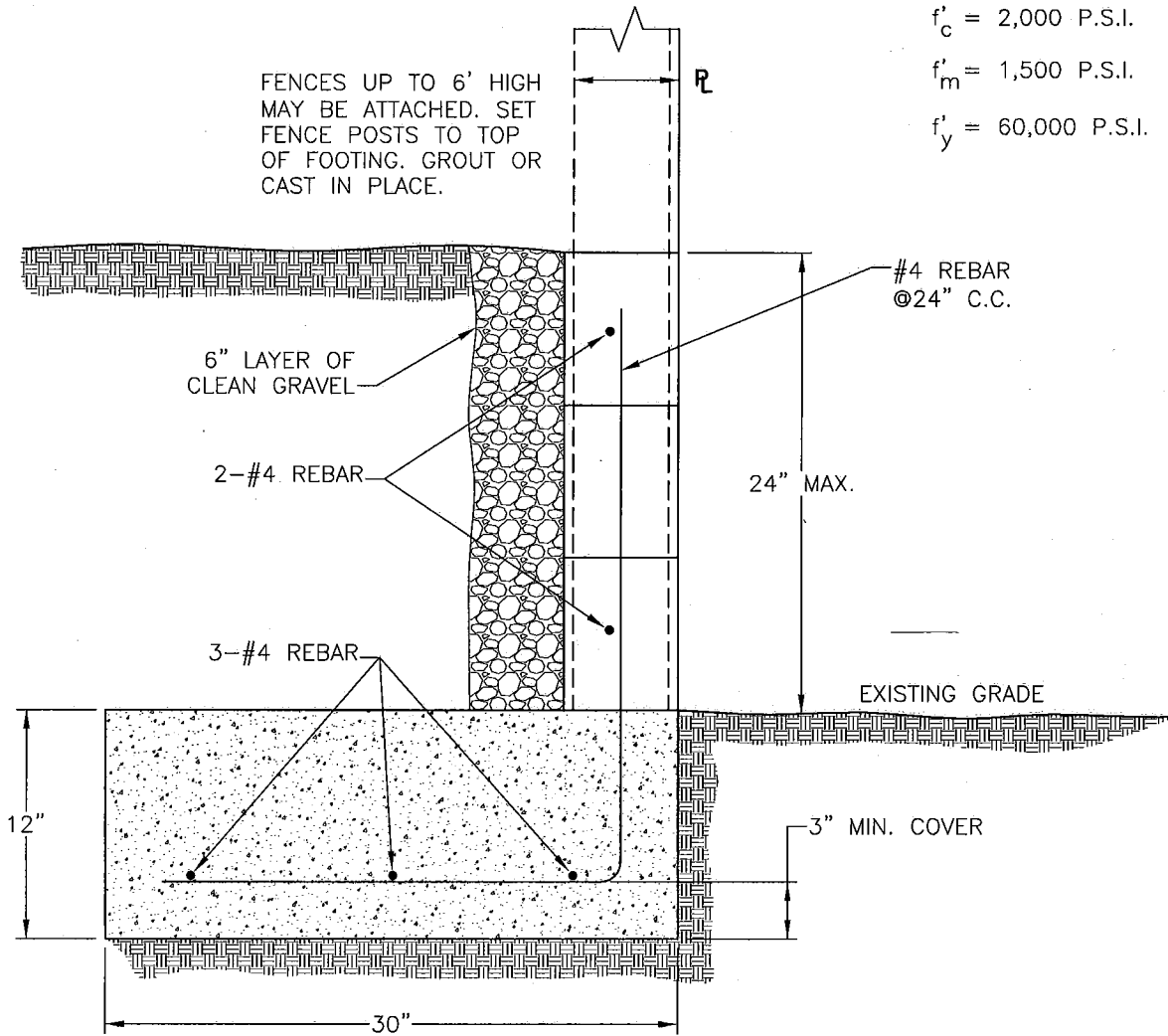


NOTES:

1. MATERIAL FOR WALLS SHALL BE GRADE NO. 2 OR BETTER REDWOOD WITH NO OPEN GRAIN MATERIAL.
2. WOOD WALLS SHALL NOT BE USED ADJACENT TO PUBLIC RIGHTS OF WAY.
3. ALL WALLS WITHIN 8 FEET OF A BOUNDARY OR PROJECT PHASE LINE SHALL BE CONSTRUCTED WITH MASONRY OR CONCRETE.
4. 4-INCH BY 6-INCH POSTS AT 4-FOOT ON CENTER SHALL BE USED AS FENCE POSTS WHEN FENCES ARE ATTACHED TO RETAINING WALLS.
5. NO DOUBLE RETAINING WALLS SHALL BE CONSTRUCTED ON SIDE YARDS.

DATE: 10/27/2008		NOT TO SCALE		CITY OF ELK GROVE - PUBLIC WORKS		APPROVED BY: _____	
REVISION	BY	APPROVED	DATE	WOOD RETAINING WALL DETAILS FOR INTERIOR PROPERTY LINES		CITY ENGINEER	
						DRAWING NUMBER	
						G - 3	





NOTES:

1. 8-INCH NORMAL WEIGHT BLOCK WITH FULL GROUTING REQUIRED.
2. A 6-INCH WIDE CAST-IN-PLACE CONCRETE STEM WALL MAY BE USED IN LIEU OF MASONRY.
3. SPECIAL INSPECTION IS NOT REQUIRED.
4. A BUILDING PERMIT IS REQUIRED FOR WALLS EXCEEDING 24" IN HEIGHT WHEN CONSTRUCTION DETAILS ARE NOT SHOWN ON APPROVED IMPROVEMENT PLANS.

DATE: 11/3/2008		NOT TO SCALE		CITY OF ELK GROVE - PUBLIC WORKS		APPROVED BY: _____	
REVISION	BY	APPROVED	DATE	MASONRY/CONCRETE RETAINING WALL DETAIL FOR FILL AREAS AT BOUNDARY AND PROJECT PHASE LINES		CITY ENGINEER	
						DRAWING NUMBER G - 4	

